

GIDEONS ELEMENTARY

GO Team Meeting

4/19/2023
Meeting #6

Call to order

For this meeting, I, Marvin Brown will serve as Chair and Shanee Patterson will serve as secretary. Please respond as your names are called establish a quorum.

Roll Call and Quorum Status

School	Role	Name
Gideons	Principal	Tiambi Walker
Gideons	Staff	Regina Hayman
Gideons	Staff	Nidra Maynard
Gideons	Staff	Aukira Walker
Gideons	Parent	Shanee Patterson
Gideons	Parent	Michelle Potter
Gideons	Parent	Brianna Howard
Gideons	Community Member	Kitty Wright
Gideons	Community Member	Ashley Hicks
Gideons	Swing	Marvin Brown

Agenda

I. Call to Order

II. Roll Call; Establish Quorum

III. Action Items

- a. Approval of Agenda
- b. Approval of Previous Minutes

IV. Discussion Items

- a. 2023 Spring MAP results
- b. SY 23-24 Budget Overview
- c. Needs Assessment

V. Information Items

- a. Principal's Report
 - a. 2022-2023 Family Engagement and/or Partnership Highlights
- b. Cluster Advisory Team Report
- c. GO Team Elections

VI. Announcements

VII. Public Comment

VIII. Adjournment

2023 Spring MAP Results

Data Points to Consider

- Spring Results
- Fall to Spring Comparison
 - Literacy
 - Numeracy



22-23 ELA Achievement Comparisons

Kindezi Gideons

	FALL 2022-2023 ACHIEVEMENT					SPRING 2022-2023 ACHIEVEMENT												
Grade	Median Percentile	Achievement Percentiles				Median Percentile	Achievement Percentiles				Number of Students ⓘ							
K	51st	4	31%	27%	21%	17%	74th	13%	10	10	25%	42%	52					
Grade 1	41st	27%	22%	27%	14%	10	43rd	27%	14%	39%	10	10	49					
Grade 2	9th	85%				10	23	17th	59%				15%	18%	3	5	39	
Grade 3	11th	54%				16%	16%	14%	12th	65%				9%	9%	12%	5	43
Grade 4	42nd	38%	13%	32%	17%		42nd	30%	20%	28%	17%	5	40					
Grade 5	9th	69%				23%	8%	12th	64%				15%	21%			39	

Percentiles Key: ● 1st to 20th ● 21st to 40th ● 41st to 60th ● 61st to 80th ● >80th

22-23 MATH Achievement Comparisons

Kindezi Gideons

	FALL 2022-2023 ACHIEVEMENT						SPRING 2022-2023 ACHIEVEMENT									
Grade	Median Percentile	Achievement Percentiles					Median Percentile	Achievement Percentiles					Number of Students ⁱ			
K	48th	22%	22%	15%	17%	24%	68th	8%	13%	22%	22%	35%	46			
Grade 1	43rd	18%	31%	20%	25%	6	43rd	16%	31%	23%	22%	8%	49			
Grade 2	20th	54%			24%	8%	6	8%	22nd	49%		32%	5	11%	3	37
Grade 3	18th	53%			18%	20%	7%	2	13th	58%		22%	9%	11%		45
Grade 4	21st	49%		26%	14%	8%	3	25th	48%		23%	17%	6	6		35
Grade 5	10th	63%			18%	3	13%	3	11th	66%		24%	8%	2		38

Percentiles Key: ● 1st to 20th ● 21st to 40th ● 41st to 60th ● 61st to 80th ● >80th

Budget Review

- Sports budget line added
- Continue cashless organization
- More partnerships (playground)
- Field Trips
- Medical Budget line (decrease of PPE)
- CARES I & II utilized

Needs Assessment

ACTIVITY



Needs Assessment

During this Needs Assessment, we will look at data from the Spring MAPS administration and identify 2-3 potential needs for the 2023-2024 school year.

This discussion will help school leadership as they begin developing the school's 2023-2024 Continuous Improvement Plan this summer.

Needs Assessment: Guiding Questions

- What does this data tell us?
- What good news is there to celebrate?
- Where are growth opportunities?
- What trends do we see in the data?

Needs Assessment:

What are two to three (2-3) needs we can identify based our data?

	Need
1	
2	
3	



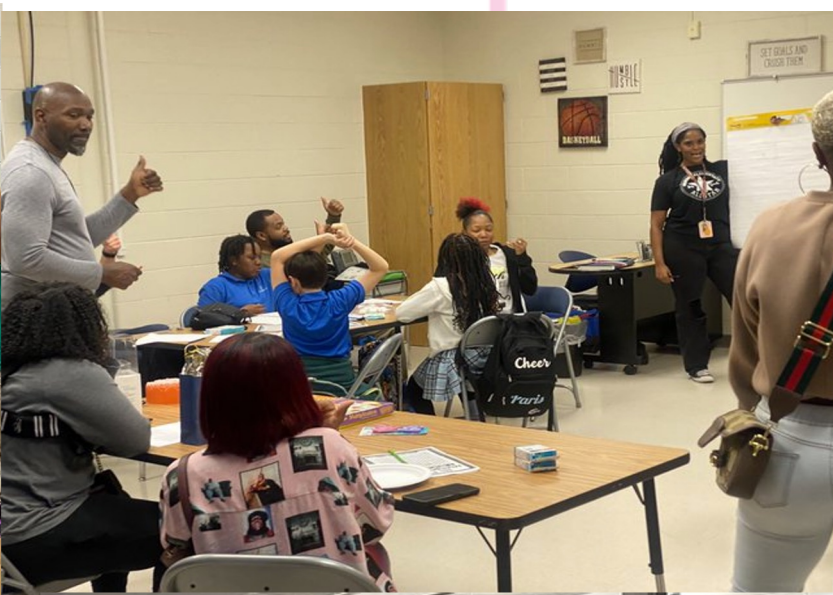
Information Items

Principal Transition



Principal's Report





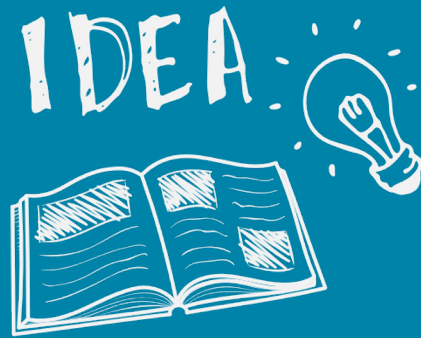
Additional Information Items

- **Cluster Advisory Team Report**
- **GO Team Elections**
 - Find candidates at apsstrongschools.com
 - Vote **APRIL 18-27**
 - Households are sent a unique link based upon information in Infinite Campus
 - School Staff will be sent a link to their APS email address

Announcements

- **GO Team Members**

- Check your email starting **May 1** for end of year survey links
 - GO Team Satisfaction Survey
 - Principal Feedback Survey
- Complete your required trainings **ASAP**
 - Contact the GO Team Office with any questions





Thank
You

for yet another
great year!

